



# GENEVA BUSINESS MANAGEMENT SYSTEMS (GBMS)

## EXTENDED PROFILE

**GENEVA SYSTEMS, INC.**



We have the code.

## OVERVIEW

Geneva Business Management System (GBMS) is an innovative, browser-based software application that addresses small to midsize business needs using an ERP or MRP solution for manufacturing, shop floor control, warehouse management, inventory control, distribution, third-party logistics (3PL) attendance, and labor tracking, B2B and B2C eCommerce, CRM, accounting, and workflow automation.

All these modules are integrated into one suite of software and are built using leading technologies and open standards, enhanced by the integrated use of automated data collection technologies that use barcodes and Radio Frequency Wireless Data Collection (RFDC). All are available at an affordable price!

GBMS supports multiple companies, multi-language, multi-currency, and runs on all major browsers such as Explorer, Google, Safari, and Firefox. GBMS can be deployed on-premises as well as hosted in the cloud from our data center.

SOFTWARE SPECIFICATION

|                                 |   |
|---------------------------------|---|
| OVERVIEW                        |   |
| PRODUCT NAME                    | Geneva Business Management Systems (GBMS) |
| BUSINESS SECTORS                |   |
| DISTRIBUTION                    | ✓   |
| GOVERNMENT & NPO                | ✓   |
| MANUFACTURING                   | ✓   |
| RETAIL                          | ✓   |
| SERVICES                        | ✓   |
| ERP SOFTWARE FEATURES           |   |
| BILLING                         | ✓   |
| BUSINESS INTELLIGENCE/ANALYTICS | ✓   |
| COSTING                         | ✓   |
| CRM                             | ✓   |
| CUSTOMER SERVICE                | ✓   |
| PRODUCT DESIGN                  | ✗   |
| FINANCIALS & ACCOUNTING         | ✓   |
| HR                              | ✗   |
| INVENTORY MANAGEMENT            | ✓   |
| ORDER MANAGEMENT                | ✓   |
| PLANNING & SCHEDULING           | ✓   |
| PROJECT MANAGEMENT              | ✓   |
| PURCHASING                      | ✓   |

|                                  |  |
|----------------------------------|--|
| QUALITY CONTROL                  | ✓  |
| SALES                            | ✓  |
| SHIPPING & DISTRIBUTION          | ✓  |
| SUPPLY CHAIN MANAGEMENT          | ✗  |
| WAREHOUSE MANAGEMENT             | ✓  |
| ASSET MANAGEMENT                 | ✗  |
| DOCUMENT MANAGEMENT              | ✓  |
| CUSTOMER SUITABILITY             |  |
| ENTERPRISE (1000+ EMPLOYEES)     | ✗  |
| MEDIUM SIZE (251-1000 EMPLOYEES) | ✓  |
| SMALL BUSINESS (1-250 EMPLOYEES) | ✓  |
| ADDITIONAL PRODUCT INFO          |  |
| MULTI LANGUAGE                   | ✓  |
| MULTI CURRENCY                   | ✓  |
| CUSTOMIZABLE                     | ✗  |
| SYSTEM HOSTING                   |  |
| CLOUD                            | ✓  |
| INSTALLED ON PREMISE             | ✓  |
| FURTHER INFORMATION              |  |
| IMPLEMENTATION TIMEFRAME         | 4 weeks  |
| PRICING                          | On premises: From USD 14,000 (cost of software license, implementation & training is included). Monthly payment of USD 1,200.00 with a one time cost of license ,implementation & training start from USD 12,000 |

SOFTWARE SCREENSHOTS

Geneva Systems

GENEVA BUSINESS MANAGEMENT SYSTEMS  
Powered by  
GENEVA SYSTEMS

My Menu

Front Office

Warehouse Management

Manufacturing & SFC

Attendance & Labor

Accounting/Finance

Company Setup

BI DashBoard

Help

Log Out

Item & Warehouse Settings

Fullfilment Processing

Fast Access

Receiving

Put Away

Picking

Shipments

Inventory

Inventory Inquiry-Regular

Inventory Inquiry-JQ

Inventory Settings

Inventory Tables

Reports

Projects Waiting on Your Approval

| Project Name | Customer | Task | State |
|--------------|----------|------|-------|
|--------------|----------|------|-------|

My Tasks

| Due Date | User | Task | Project Name | Project ID | Customer | Current State |
|----------|------|------|--------------|------------|----------|---------------|
|----------|------|------|--------------|------------|----------|---------------|

Tasks

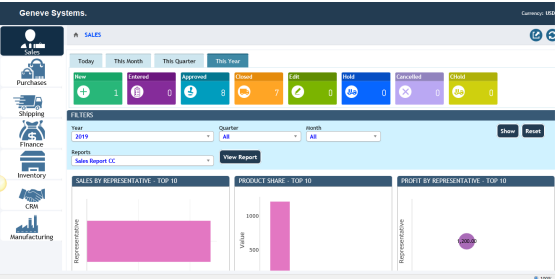
| Due Date | User | Task | Project Name | Project ID | Customer | Current State |
|----------|------|------|--------------|------------|----------|---------------|
|----------|------|------|--------------|------------|----------|---------------|

<

avascriptvoid(0);

>

100%



Geneve Systems, inc.

Welcome shahid@genevesystems.com

MY ACCOUNT

LOGOUT

Select Language

01/01/2019

Search

SEARCH PRODUCTS HERE

CART (0) Items

HOME

POWEREDGE SERVER (1)

TEST (24)

PowerEdge Server

Product Details

Qty: 1

ADD TO CART

UPDATE QUOTE

This product needs to be connected to adding to cart

Choose Year - PowerSupply

Single 120 plug Power Supply (2x)

EA

Qty: 1

Price: \$180

Choose Year - PowerCable

C13 to C14, PSU Style, 12 AMP, 2

EA

Qty: 1

Price: \$9

Choose Year - Processor

Intel Xeon Bronze 3404 1.7G, 8G

EA

Qty: 1

Price: \$239

Choose Year - Memory

Memory 32 GB PC16800, 2666MT/s

EA

Qty: 2

Price: \$180

Choose Year - Motherboard

PowerEdge R740SR1600D - 8120

UOM

Qty: 1

Price: \$120

Choose Year - Chassis

Chassis with up to 76 x 2.5 bays

EA

Qty: 1

Price: \$600

Welcome: Geneva

Log Out

Main Menu

About

|                       |   |
|-----------------------|---|
| RECEIVING WITH PO     | 1 |
| RECEIVING WITHOUT PO  | 3 |
| PUT AWAY              | 0 |
| PICKING               | 2 |
| INVENTORY MOVEMENTS   |   |
| INVENTORY ADJUSTMENTS |   |
| INVENTORY INQUIRY     |   |

Geneve Systems, inc. is a leading provider of IT solutions and services. We specialize in helping businesses of all sizes optimize their IT infrastructure and improve their operational efficiency. Our team of experts is dedicated to providing personalized solutions that meet your specific needs and budget. Contact us today to learn more about our services and how we can help you achieve your business goals.