



EPICOR KINETIC EXTENDED PROFILE

EPICOR

OVERVIEW

Capture the true value of cloud ERP with Epicor Kinetic (formerly Epicor ERP), a solution made with manufacturers, for manufacturers. An intuitive, configurable, and guided user experience with embedded learning helps you maximize your profitability with real-time business intelligence and built-in collaboration tools.

Kinetic has the functionality you need to run a modern, future-ready business poised to capitalize on data, transform digitally, and innovate without limits. All the features you need to scale, compete, and attract top talent to your organization.

MANUFACTURING SOFTWARE BACKED BY EPICOR'S DECADES OF INDUSTRY EXPERTISE

Trust the manufacturing expertise of Epicor to gain the momentum and know-how you need to accelerate growth and innovation. Epicor Kinetic is distinguished by its increasingly broad focus on planning and managing all resources, both within and across locations and company boundaries. Power your business with a secure, tightly integrated ERP and embedded capabilities.

This expanded scope is most strongly felt in the areas of Customer Relationship Management (CRM), Supply Chain Management (SCM), Advanced Planning and Scheduling (APS), Product Lifecycle Management (PLM), Advanced Manufacturing Execution System (MES), Quality Management System (QMS), Field Service Management (FSM), and Business Process Management (BPM) to name only a few. Manufacturers of all sizes have recognized the value of an integrated suite rather than trying to piece disparate solutions together.

FREQUENTLY ASKED QUESTIONS

WHAT IS THE DIFFERENCE BETWEEN EPICOR ERP AND EPICOR KINETIC?

Epicor Kinetic is the rebranded and updated version of Epicor ERP, launched to modernize the platform with a more user-friendly, cloud-focused approach. While they were both built to support the manufacturing and distribution industries, there are some key differences:

- **UI:** Epicor Kinetic introduces a redesigned, more intuitive user interface compared to the earlier Epicor ERP versions. The Kinetic UI emphasizes ease of use, with guided navigation, customizable dashboards, and a modernized, responsive design that reduces learning curves.
- **Cloud-first architecture:** While Epicor ERP offered cloud deployment options, Epicor Kinetic is built with a cloud-first approach, promoting remote access, automatic updates, and scalability. Kinetic's architecture is optimized for cloud use, though it still supports on-premise and hybrid deployment models for flexibility.
- **Enhanced embedded learning tools:** Epicor Kinetic includes more extensive, embedded learning and training tools designed to support user onboarding and continuous learning directly within the application. These help users quickly adapt to the software and make the most of its features.
- **Advanced capabilities for digital transformation:** Kinetic offers new and updated modules to support digital transformation in manufacturing, such as Advanced Planning and Scheduling (APS), enhanced Customer Relationship Management (CRM), and improved analytics and reporting capabilities.
- **Future-proof development:** Epicor Kinetic is a future-ready ERP platform designed to embrace trends like IoT, AI, and machine learning. It offers advanced tech integration compared to its legacy counterpart.

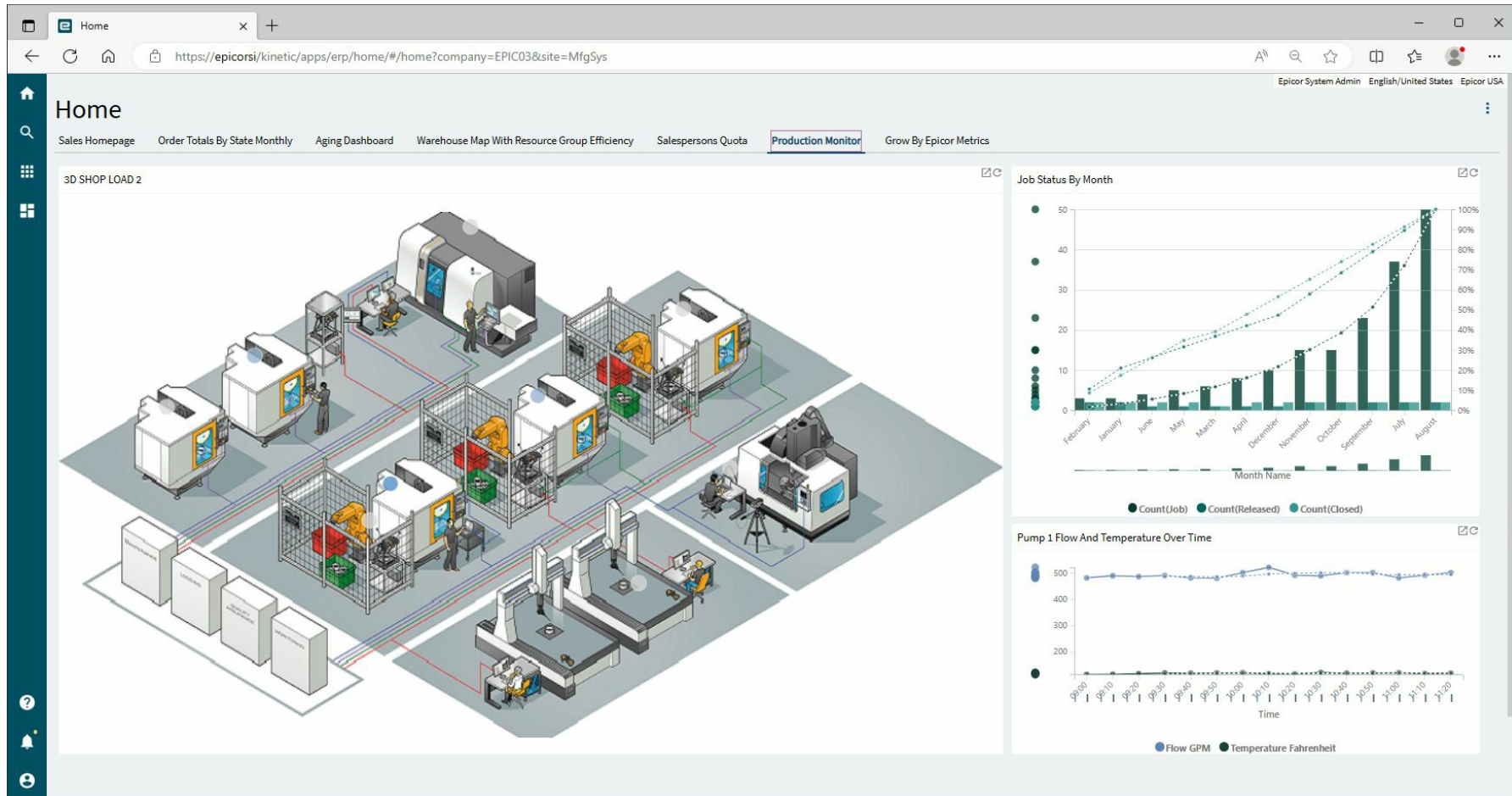


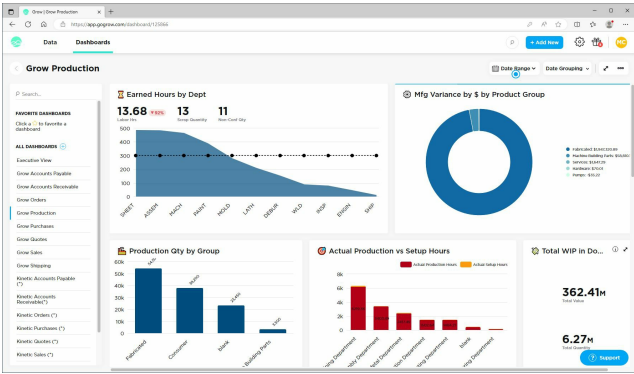
SOFTWARE SPECIFICATION

OVERVIEW	
PRODUCT NAME	Epicor Kinetic
BUSINESS SECTORS	
DISTRIBUTION	✗
GOVERNMENT & NPO	✗
MANUFACTURING	✓
RETAIL	✗
SERVICES	✗
INDUSTRY	
AEROSPACE & DEFENSE	✓
AUTOMOTIVE	✓
CHEMICAL	✗
CONSTRUCTION	✓
COSMETICS	✗
ELECTRONICS	✓
ENERGY/POWER/UTILITIES	✗
ENGINEERING	✓
FASHION	✗
FINANCIAL SERVICES	✗
FOOD & BEVERAGE	✗
LOCAL GOVERNMENT	✗
MEDIA	✗

MEDICAL & HEALTHCARE	✓
METALWORKING	✓
OILFIELD	✗
PACKAGING	✓
PAINT & ADHESIVES	✗
PHARMACEUTICAL	✗
PLASTICS & RUBBER	✓
PRINT & DESIGN	✗
RENTAL	✗
TELECOMMUNICATIONS	✗
WOODWORKING	✓
CANNABIS	✗
EDUCATION	✗
NONPROFIT	✗
ERP SOFTWARE FEATURES	
BILLING	✓
BUSINESS INTELLIGENCE/ANALYTICS	✓
COSTING	✓
CRM	✓
CUSTOMER SERVICE	✓
PRODUCT DESIGN	✓
FINANCIALS & ACCOUNTING	✓
HR	✓
INVENTORY MANAGEMENT	✓
ORDER MANAGEMENT	✓

PLANNING & SCHEDULING	✓
PROJECT MANAGEMENT	✓
PURCHASING	✓
QUALITY CONTROL	✓
SALES	✓
SHIPPING & DISTRIBUTION	✓
SUPPLY CHAIN MANAGEMENT	✓
WAREHOUSE MANAGEMENT	✓
ASSET MANAGEMENT	✓
DOCUMENT MANAGEMENT	✓
CUSTOMER SUITABILITY	
ENTERPRISE (1000+ EMPLOYEES)	✓
MEDIUM SIZE (251-1000 EMPLOYEES)	✓
SMALL BUSINESS (1-250 EMPLOYEES)	✓
ADDITIONAL PRODUCT INFO	
MULTI LANGUAGE	✓
MULTI CURRENCY	✓
CUSTOMIZABLE	✗
SYSTEM HOSTING	
CLOUD	✓
INSTALLED ON PREMISE	✓
FURTHER INFORMATION	
PRICING	Monthly Subscription starting at \$175 / user
IMPLEMENTATION TIMEFRAME	24 weeks



[illegible]

Classic Epicor Education Course

Search

Live Training

Search

My Agenda

Open

My Certifications

Open

My Registrations

Open

My Assignments

2022.2 Sales Enablement Survey
Live from 11/9/2022

Featured Content

Understanding the System Flow

SALES

PRODUCTION

MATERIAL

FINANCE

Shortcuts

No Shortcuts Added

Library

Epicor Learning Center

Digitize badge Signature update

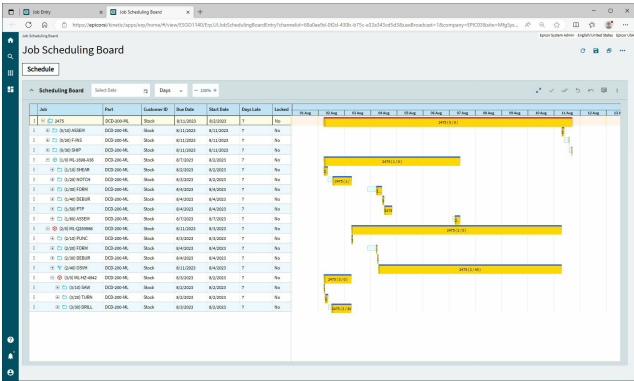
Test

Documentation Links

WinCC 2021.1 Application Help

Epicor Manuals Help

© 2022 Epicor Software Corporation | Privacy Policy | Cookies Policy

[illegible]