

ACUMATICA CLOUD ERP EXTENDED PROFILE

OVERVIEW

Acumatica Cloud ERP delivers integrated business applications (financials, distribution/WMS, manufacturing, CRM, project accounting, and industry-specific modules) that share a single source of truth and real-time reporting.

It boasts modern workflows, industry-specific capabilities, and automation, with the 2025 R1 release adding enhanced connectivity, AI-driven automation, and improved customization options.

The platform supports open integration standards (contract-based REST and SOAP APIs, OData endpoints) so teams can build rapid integrations and custom endpoints with predictable contracts.

Developers and partners commonly use Acumatica's contract-based REST API and OData for read/write or read-only scenarios.

Licensing and pricing for Acumatica Cloud ERP follow a consumption- and functionality-based model (not per named user): costs are driven by the applications you license + reserved resource tiers/consumption rather than a per-seat fee.

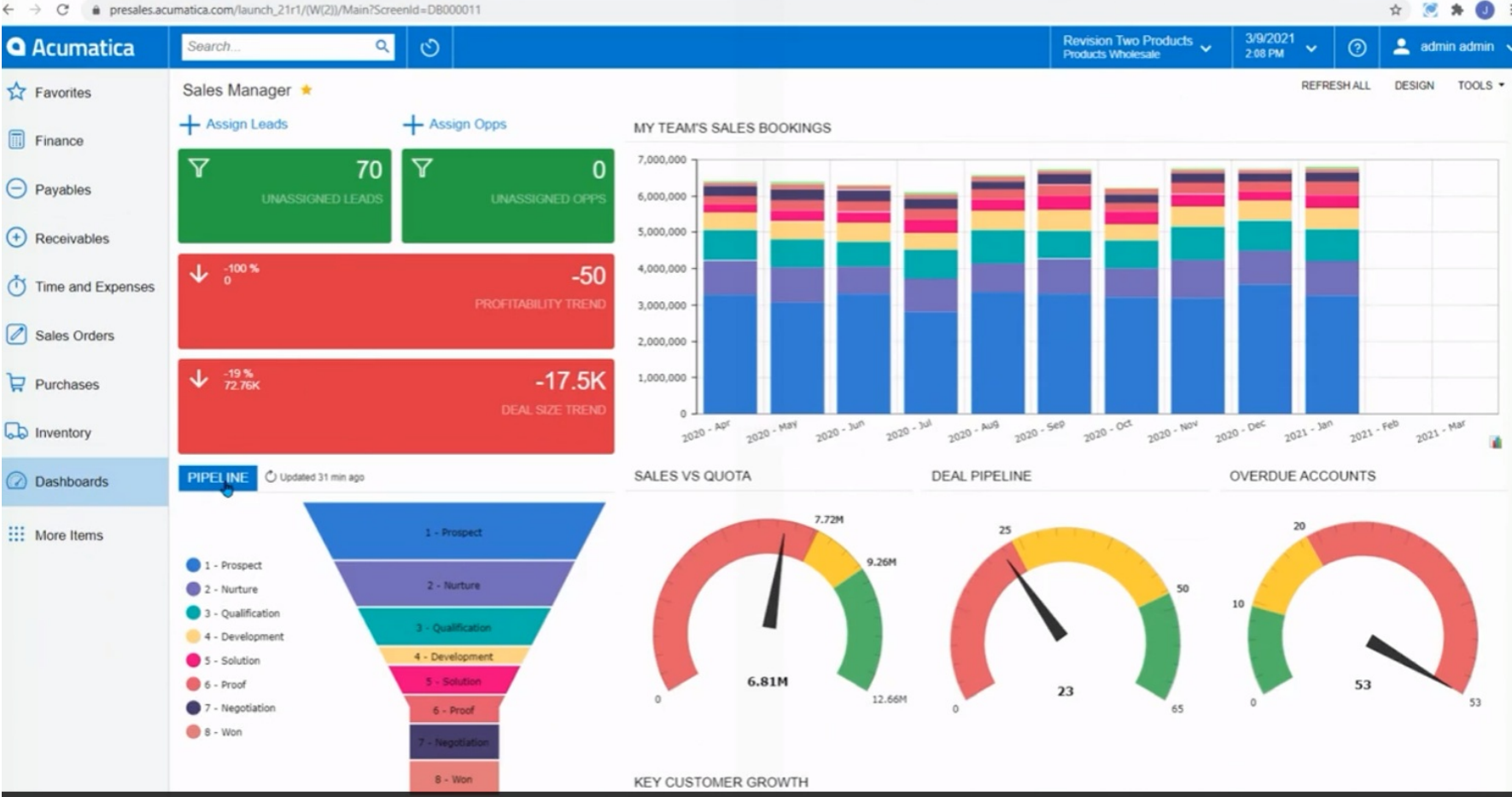
SOFTWARE SPECIFICATION

OVERVIEW	
PRODUCT NAME	Acumatica Cloud ERP
BUSINESS SECTORS	
DISTRIBUTION	✓
GOVERNMENT & NPO	✗
MANUFACTURING	✓
RETAIL	✓
SERVICES	✓
INDUSTRY	
AEROSPACE & DEFENSE	✓
AUTOMOTIVE	✓
CHEMICAL	✓
CONSTRUCTION	✓
COSMETICS	✓
ELECTRONICS	✓
ENERGY/POWER/UTILITIES	✗
ENGINEERING	✓
FASHION	✓
FINANCIAL SERVICES	✓
FOOD & BEVERAGE	✓
LOCAL GOVERNMENT	✗

MEDIA	✓
MEDICAL & HEALTHCARE	✗
METALWORKING	✓
OILFIELD	✓
PACKAGING	✓
PAINT & ADHESIVES	✓
PHARMACEUTICAL	✗
PLASTICS & RUBBER	✓
PRINT & DESIGN	✓
RENTAL	✓
TELECOMMUNICATIONS	✓
WOODWORKING	✓
CANNABIS	✓
EDUCATION	✗
NONPROFIT	✗
ERP SOFTWARE FEATURES	
BILLING	✓
BUSINESS INTELLIGENCE/ANALYTICS	✓
COSTING	✓
CRM	✓
CUSTOMER SERVICE	✓
PRODUCT DESIGN	✗
FINANCIALS & ACCOUNTING	✓
HR	✗
INVENTORY MANAGEMENT	✓

ORDER MANAGEMENT	✓
PLANNING & SCHEDULING	✓
PROJECT MANAGEMENT	✓
PURCHASING	✓
QUALITY CONTROL	✓
SALES	✓
SHIPPING & DISTRIBUTION	✓
SUPPLY CHAIN MANAGEMENT	✓
WAREHOUSE MANAGEMENT	✓
ASSET MANAGEMENT	✓
DOCUMENT MANAGEMENT	✓
CUSTOMER SUITABILITY	
ENTERPRISE (1000+ EMPLOYEES)	✓
MEDIUM SIZE (251-1000 EMPLOYEES)	✓
SMALL BUSINESS (1-250 EMPLOYEES)	✓
ADDITIONAL PRODUCT INFO	
MULTI LANGUAGE	✓
MULTI CURRENCY	✓
CUSTOMIZABLE	✗
SYSTEM HOSTING	
CLOUD	✓
INSTALLED ON PREMISE	✓
FURTHER INFORMATION	
PRICING	Consumption based pricing model, only pay for the resources used.

SOFTWARE SCREENSHOTS



MY TEAM'S SALES BOOKINGS



SALES VS QUOTA



DEAL PIPELINE



OVERDUE ACCOUNTS



KEY CUSTOMER GROWTH

